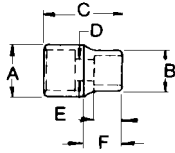
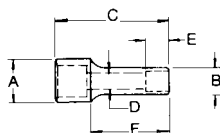


**NEW  
SIZE\***

**EYE-D**
**6 Point 1/2" Drive Impact Sockets**
**METRIC**

Product Number	Opening, mm	Weight, g	A Drive End	B Wrench End	C Overall Length	D Bolt Clearance	E Wrench Depth	F Length to Shoulder
47-008*	8	90	22.2	13.0	38.0	5.2	9.5	12.5
47-009	9	90	22.2	15.6	38.0	5.6	11.1	12.5
47-010	10	90	22.2	15.6	38.0	9.0	5.5	12.5
47-011	11	90	22.2	16.7	38.0	9.0	6.5	12.5
47-012	12	90	22.2	18.8	38.0	9.0	7.5	12.5
47-013	13	90	24.3	20.1	38.0	13.5	7.5	12.5
47-014	14	90	24.3	20.8	38.0	13.5	9.5	12.5
47-015	15	90	24.3	24.3	38.0	13.5	9.5	
47-016	16	136	24.3	24.3	38.0	13.5	10.5	
47-017	17	136	26.7	26.7	38.0	13.5	10.5	
47-018	18	136	27.8	27.8	38.0	13.5	11.0	
47-019	19	136	30.1	30.1	38.0	14.4	12.0	
47-020	20	136	30.1	30.3	41.0	15.0	12.5	
47-021	21	136	31.8	31.8	41.0	15.0	12.5	
47-022	22	136	32.0	32.0	41.0	15.0	13.5	
47-023	23	181	33.3	33.3	44.5	16.0	13.5	
47-024	24	181	36.5	36.5	45.2	19.1	17.5	
47-025	25	181	36.5	36.5	45.2	19.1	17.5	
47-026	26	227	38.1	38.1	50.8	19.1	19.5	
47-027	27	227	37.9	37.9	44.5	20.7	15.2	
47-028*	28	232	38.9	38.9	50.8	20.6	22.0	
47-029*	29	253	41.3	41.3	50.8	21.4	22.0	
47-030	30	272	41.3	41.3	52.4	22.6	22.0	
47-032*	32	272	44.5	44.5	52.4	24.0	22.0	
47-033*	33	282	46.0	46.0	52.4	25.0	22.9	
47-034*	34	286	47.6	47.6	52.4	25.4	22.9	
47-035*	35	286	49.2	49.2	54.0	27.0	22.9	
47-036*	36	286	50.8	50.8	54.0	27.0	22.9	

**NEW  
SIZE\***

**EYE-D**
**6 Point 1/2" Drive Deep Impact Sockets**
**METRIC**

Product Number	Opening, mm	Weight, g	A Drive End	B Wrench End	C Overall Length	D Bolt Clearance	E Wrench Depth	F Length to Shoulder
47-208*	8	181	22.2	13.0	82.0	5.2	9.5	12.5
47-209	9	181	22.2	15.6	82.0	5.6	11.1	12.5
47-210	10	181	22.3	15.6	82.0	9.5	14.5	12.5
47-211	11	181	22.3	16.7	82.0	10.8	14.5	12.5
47-212	12	181	22.3	18.8	82.0	11.4	14.5	12.5
47-213	13	181	24.4	20.1	82.0	12.5	12.7	12.5
47-214	14	181	24.4	22.2	82.0	13.8	12.7	12.5
47-215	15	188	24.4	24.4	82.0	14.8	12.7	
47-216	16	188	24.4	24.4	82.0	15.6	13.5	
47-217	17	221	26.6	26.6	82.0	16.5	13.5	
47-218	18	245	27.8	27.8	82.0	17.0	14.5	
47-219	19	296	30.1	30.1	82.0	18.0	16.0	
47-220	20	334	31.8	31.8	82.0	19.0	16.0	
47-221	21	330	31.8	31.8	82.0	19.0	16.0	
47-222	22	330	32.0	32.0	82.0	19.0	17.0	
47-223	23	354	33.3	33.3	82.0	20.0	17.5	
47-224	24	350	33.3	33.3	82.0	20.0	17.5	
47-225	25	471	36.5	36.5	83.0	19.1	17.5	
47-226	26	520	38.1	38.1	83.0	19.1	19.8	
47-227	27	451	38.1	38.1	83.0	20.7	38.0	
47-228	28	485	39.7	39.7	88.9	20.7	22.2	
47-229	29	464	41.3	41.3	88.9	27.0	27.9	
47-230	30	499	41.3	41.3	88.9	27.0	27.9	
47-232	32	499	44.5	44.5	88.9	28.4	28.6	
47-234	34	544	50.8	50.8	88.9	33.0	34.3	
47-235	35	544	50.8	50.8	88.9	33.0	34.3	
47-236	36	590	50.8	50.8	88.9	33.0	34.3	

